

Cairns-Port Douglas Reef Hub Network Strategy

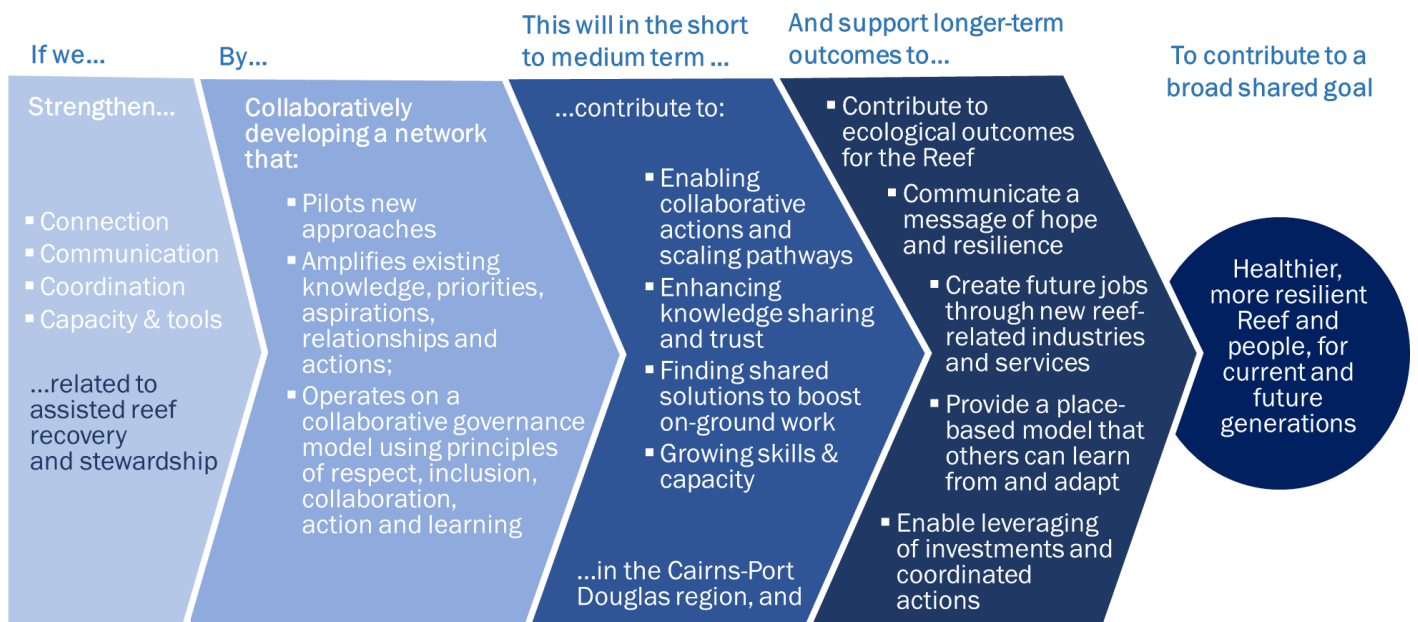
January 2023 to June 2024

The Hub is an open collaborative network that connects people to share, learn, and pilot new collaborative approaches to care for the Reef in the face of climate change. The network aims to strengthen assisted coral reef recovery, protection and adaptation for the benefit of local reefs and communities.

The Hub network aims to deliver through four key areas of action:

- **Stronger Connections** – Growing pathways and piloting new activities to connect a range of types and scales of work to foster impactful techniques & scaling pathways
- **Enhanced Communication** – Providing a platform for sharing and learning across Traditional Owners, tourism, government, research, and community to enhance knowledge sharing, trust and action
- **Improved Coordination** – Finding shared solutions to streamline activities for on-ground delivery
- **Strengthened Capacity & Tools** – Enabling access to tools and training to build skills and grow capacity for impactful reef recovery actions

Snapshot theory of change



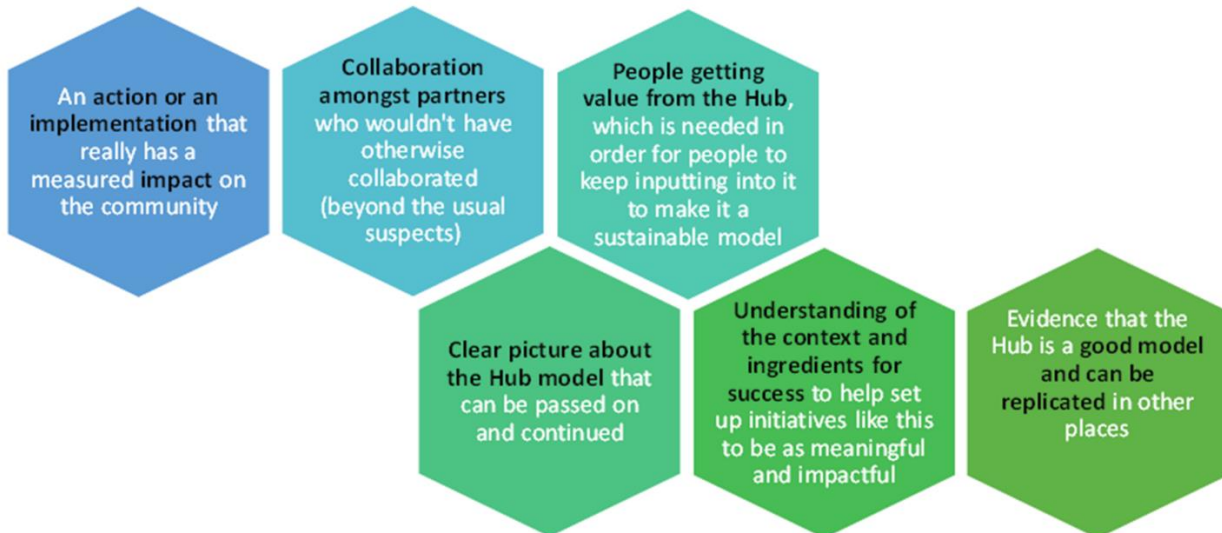
Key priorities through June 2024

1. Strengthen dialogue with Reef Traditional Owners to better understand aspirations and needs, to clarify the value of the Hub for Traditional Owners, and enable shared learning, knowledge exchange and leadership. A key area of focus is on achieving real education pathway and employment outcomes identified by Traditional Owners.
2. Enable strategic and targeted pilot projects in the Cairns-Port Douglas area that contribute to building collaborative scaling and innovation pathways for Reef recovery and adaptation through supporting knowledge sharing, partnerships, and resourcing opportunities with RRAP and other key partners.
3. Outline and deliver ways to share learnings and methods from pilot projects that benefit the wider sector and bring visibility to the work.
4. Scope tangible opportunities for the Hub to facilitate or leverage streamlined approaches for working with Reef managers.
5. Identify program models to deliver the Hub's priority work outlined above and identify a range of potential transition pathways when RTP funding ends in June 2024.

How our learnings are shaping approach

The project is using an action learning approach - working to collaboratively build a network that meets a range of needs, and to learn and adapt as we go. Hub activities are driven by direct feedback from the Hub network and Steering Group.

Some key ingredients for success in the next phase of the Hub have been identified:

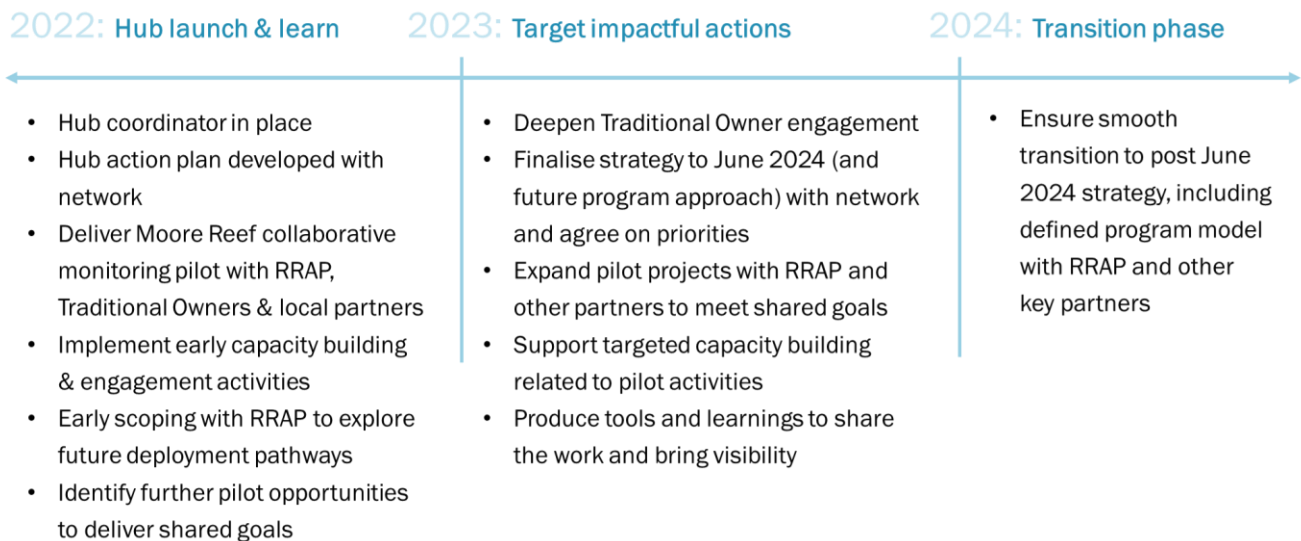


We have also been learning through trialling a range of activities in the first year of implementation, some key take-aways include:

- Meeting face-to-face with the broader network was a critical step in building the network and active dialogue.
- Getting tangible activities underway was an important step in making the idea of the Hub more real and is helping to now inform steps to refine where we focus our efforts.
- There is strong interest in capacity building activities, with active participation in knowledge sharing and capacity building activities such as the AMSA field workshop and Coral ID workshop. Building on this, there is recognition that:
 - Building enduring capacity pathways requires longer-term and phased approaches towards clear outcomes and certifications.
 - Growing capacity for readiness to grow the scale of interventions will take time, therefore targeted, collaborative and phased capacity building approaches are critical.
- The Moore Reef Collaborative Monitoring project has demonstrated that designing a shared approach to pilot new ways of working together can be a useful connector that leverages a range of different capacities, helps build trust, and can generate useful outcomes. Targeted pilot projects can be a key focus for the Hub moving forward, offering a frame for building pathways to scaling approaches that inform priorities for capacity building. These pilots can also help to explore potential models for sustainable project implementation.
- There is recognition of the importance of looking at coral restoration in a wider more holistic view, nurtured by learning from Traditional ways of knowing and recognising the interconnectedness of the Reef and other ecosystems. This is prompting a step to map wider relevant work and Hub connections.
- The Hub is well-placed to demonstrate the challenges and opportunities of place-based collaborative program implementation in a very complex space. It's important to keep capturing information to document how the model is working, what are the critical ingredients and how well it is delivering value.

Hub timelines and phases

This timeline shows different phases of the Hub implementation and key activities in a timeline.



Background

Reef health pressures are growing and the window of time we have to shape a better future for reefs and Reef communities calls for a more hands-on approach to caring for the Reef.

Well-designed coral protection and rehabilitation activities are one tool to help reef sites of critical value bridge a gap while urgent efforts to address climate change are underway. As active Reef protection and rehabilitation efforts increase, so does the need for more collaborative, scalable and highly impactful approaches.

When Hub development commenced in 2020, there were a series of early discussions to collaboratively design the approach. Some key issues or drivers for the Hub concept included: Reef health decline, the need for greater cohesion/continuing to reduce competition across groups, differences in understanding about assisted Reef recovery, and increasing but potentially, ad hoc efforts. The design of the Hub aims to further collaborative solutions to these challenges.

The Cairns-Port Douglas Reef Hub is a collaborative network that helps to identify ways to connect and accelerate the scale and impact of Reef protection, recovery and adaptation activities in the local area.

The Cairns-Port Douglas Reef Hub is funded by the partnership between the Australian Government's Reef Trust and the Great Barrier Reef Foundation. The Hub is coordinated by TropWATER at James Cook University and enabled by the partnership's Community Reef Protection and Traditional Owner Reef Protection components, and the Reef Restoration and Adaptation Program with a network of local partners.

Thanks to the [Steering Group](#), [strategic and technical advisors](#), and the wider Hub network for making this work possible.

