

# CREATIVE PROJECTS



**Inspiring hearts and minds through  
the beauty of The Great Barrier Reef**



Great Barrier  
Reef Foundation



# CONTENTS

Baby green turtle	<b>3-4</b>
Mini coral reef	<b>5-6</b>
Sea star garland	<b>7-9</b>
Colour the reef	<b>10-13</b>
Additional resources	<b>14</b>
Acknowledgements	<b>14</b>





# BABY GREEN TURTLE

The endangered green turtle population is under threat from being caught in fishing nets, and mistaking harmful plastic for tasty jellyfish. As temperatures increase and sea levels rise, turtle nests are being flooded, drowning little hatchlings before they reach the surface.

The Great Barrier Reef Foundation is helping to rebuild the worlds largest turtle nesting sites on Raine Island, moving sand to protect the nests from flooding.

You can help too, by trying to reduce how much plastic you use and recycling wherever possible.



Great Barrier  
Reef Foundation



# BABY GREEN TURTLE

*Make a baby Green Turtle using a recycled egg carton*

## YOU WILL NEED

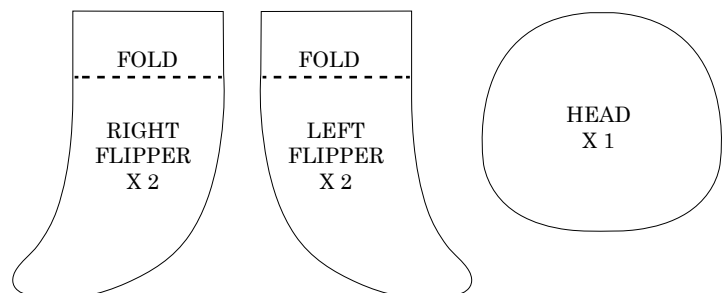
- A clean, empty cardboard egg carton\*
- Green and blue non-toxic paint
- Moulding putty (eg blu-tack)
- Masking tape
- Child safe scissors
- A black pen
- A printed copy of the flipper and head template below

## HOW TO MAKE IT

1. Cut out one of the cup sections out from the egg carton. Neaten the edges by trimming it evenly around the base. This will be the turtle's shell.
2. On a protected surface, paint the shell shape and inside the lid of the egg carton in green or blue tones and allow to dry.
3. Cut out the templates and place them on the painted lid section of the egg carton. Trace 2 of each flipper shape and 1 head shape and cut them out.
4. Fold the ends of the flippers up so they will neatly tuck under the turtle's shell, and secure them in place using small pieces of making tape.
5. Draw eyes and a mouth onto the head shape, and using the moulding putty, stick it to the front of the turtle's shell.



## TEMPLATE



**\*Note to Guardians:**  
**Do not use egg cartons with children who have egg allergies.**  
**Please supervise and if necessary, assist children throughout this activity, especially when using scissors.**



Great Barrier  
Reef Foundation



# MINI CORAL GARDEN

The Great Barrier Reef is the largest living thing on Earth! There are lots of factors causing serious damage to coral reefs like the Ocean getting hotter and a nasty starfish called the Crown of Thorns. The Great Barrier Reef Foundation is helping rebuild parts of the Reef by growing and planting new corals, and releasing baby corals onto damaged sections of the Reef to regenerate them.



Great Barrier  
Reef Foundation



# MINI CORAL GARDEN

*Make your very own Reef sculpture using the beautiful shapes of found foliage.*

## YOU WILL NEED

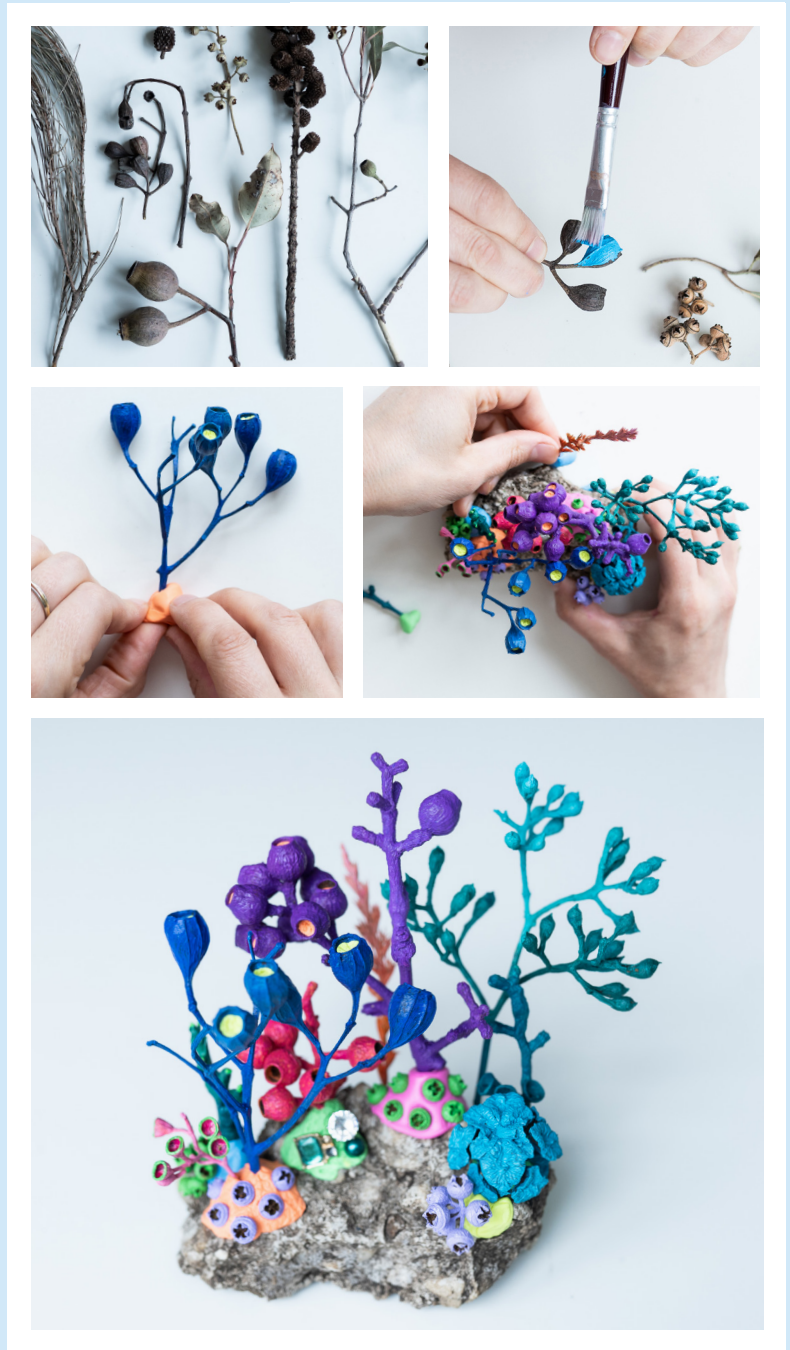
- A small selection of dried natives plants eg: gumnuts, knobly twigs, thin leaves, clusters of little seed pods etc.
- Moulding putty (eg blu-tack)
- A surface to build your coral on eg: a flat rock, piece of bark or a plate.

## HOW TO MAKE IT

1. Wearing gardening gloves, go on a foraging hunt for dried foliage. You may notice how similar the shapes of foliage are to coral!
2. From your gathered foliage, select your favourite sections. At this stage you may like to paint the foliage coral-inspired colours, or you can leave them bare to display their natural beauty.
3. Place the base of each piece of foliage securely into some putty, and arrange them on your surface. Use a mix of shapes, heights and textures to mimic the diversity of a real coral reef.

### **Note to Guardians:**

**Please supervise and if necessary, assist children throughout this activity. Check for insects that may be present on or inside the dried foliage before collecting it, and also be wary of pointy or rough edges that may be on sticks and seeds.**



## EXTRA TIPS

Only use foliage that is already dried. Fresh foliage will still be bendy and will change shape as it dries.

After securing each piece in place, add texture to your putty to make it look more 'rocky' by gently poking it all over with a small stick. Add old jewellery or craft crystals into the putty to make it look like there is treasure in your Reef!



Great Barrier Reef Foundation



# SEA STAR GARLAND

The Crown of Thorns starfish is a coral eating machine that causes huge damage to the Reef, by eating the coral faster than the coral can grow. The Great Barrier Reef Foundation is working with Scientists to develop new ways of monitoring and controlling Crown of Thorns starfish numbers.

While the Crown of Thorns starfish is a narsty critter for both the Reef and Humans, there are lots of other friendly and helpful sea stars like the Granulated sea star, the Necklace sea star and the Rhinoceros sea star.



Great Barrier  
Reef Foundation



# SEA STAR GARLAND

*Create a garland of colourful sea stars to hang as a reef inspired decoration!*

## YOU WILL NEED

- 1 sheet of recycled A4 paper, printed with the template from the next page
- Coloured paints and paintbrush
- Child safe scissors
- 1.5 metres of ribbon or string
- Stickytape

## HOW TO MAKE IT

1. On the back of the printed template, paint the whole page with bright colours and leave to dry.
2. Once dry, carefully cut out each sea star following the solid outlines on the template.
3. Fold along each dotted line (in a concertina style) to make your sea stars 3 dimensional.
4. Spacing your stars evenly, carefully stick them along your piece of ribbon or string using stickytape.

**Note to Guardians:**  
**Please supervise and if necessary, assist children throughout this activity, especially when using scissors.**



## EXTRA TIPS

Create extra sea stars and use a longer ribbon to make a really long garland for extra decorative impact!

Using the scraps left over from cutting out your sea stars, you might like to cut out little shapes to make extra decorations to add to your garland.



Great Barrier  
Reef Foundation



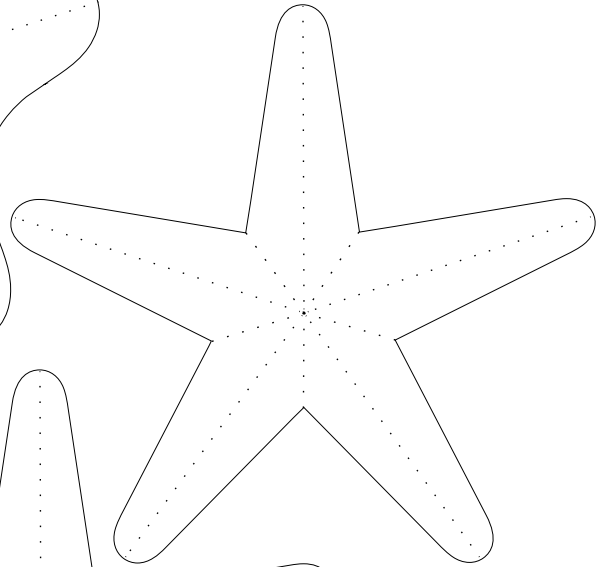
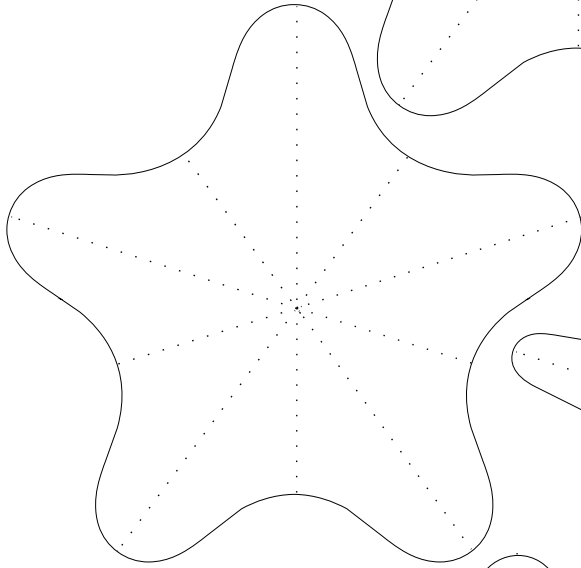
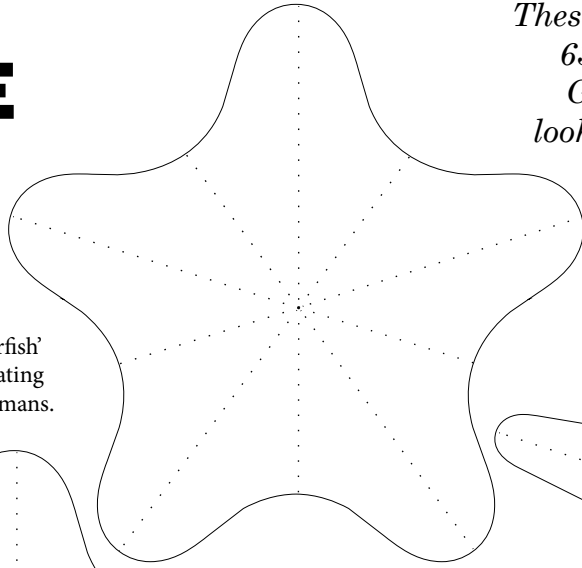
# SEA STAR TEMPLATE

*These templates are based on some of the 630 types of Sea Stars that live on the Great Barrier Reef! You might like to look up some photos of them to see their amazing colours and patterns!*

## Granulated sea star

*Choriaster granulatus*

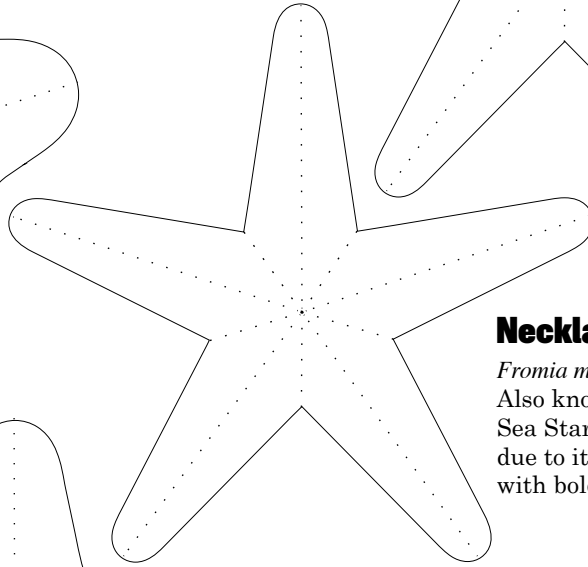
Also known as the 'Doughboy Starfish' this friendly little sea star enjoys eating coral polyps and is harmless to humans.



## Necklace sea star

*Fromia monilis*

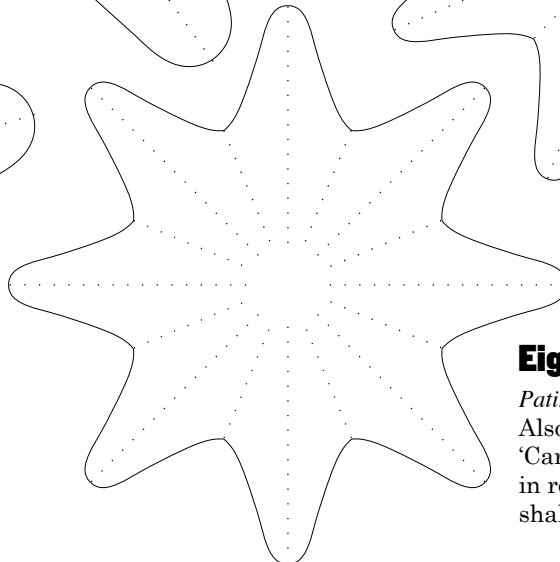
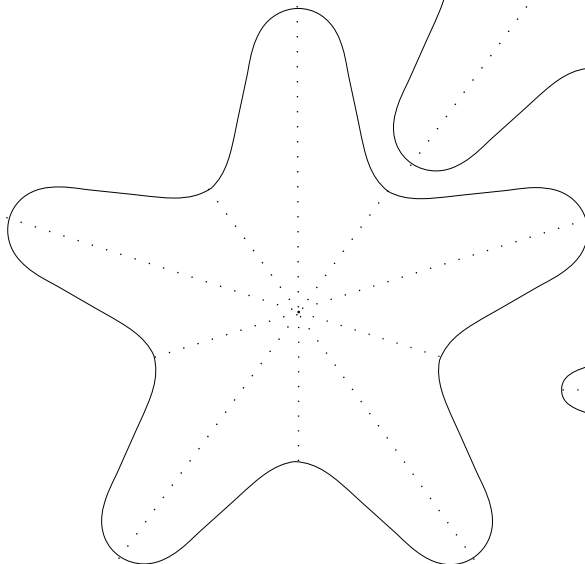
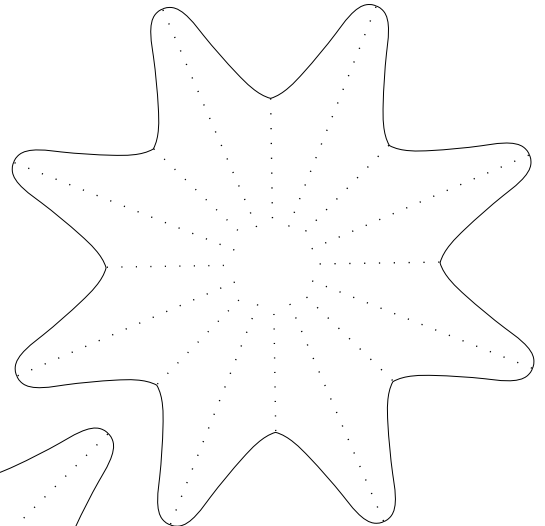
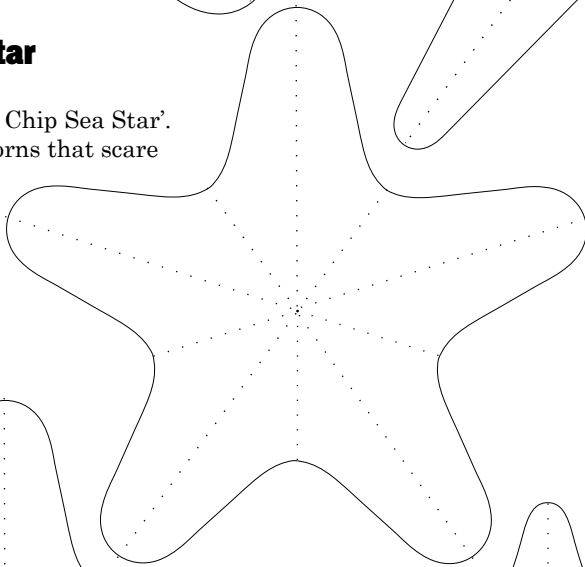
Also known as the 'Peppermint Sea Star', it is easily recognisable due to its bright red body patterned with bold white markings.



## Rhinoceros sea star

*Protoreaster nodosus*

Also known as the 'Choc Chip Sea Star'. It is covered in spikey horns that scare away predators!



## Eight-armed sea star

*Patriella calcar*

Also known as the 'Cushion' or 'Carpet' Sea Star, it is often found in rock pools as it prefers to live in shallow waters.



# COLOUR THE REEF



Did you know corals are not plants!  
There are 600 different types of coral  
to decorate this scene of a friendly reef!



Great Barrier Reef Foundation



# COLOUR THE REEF

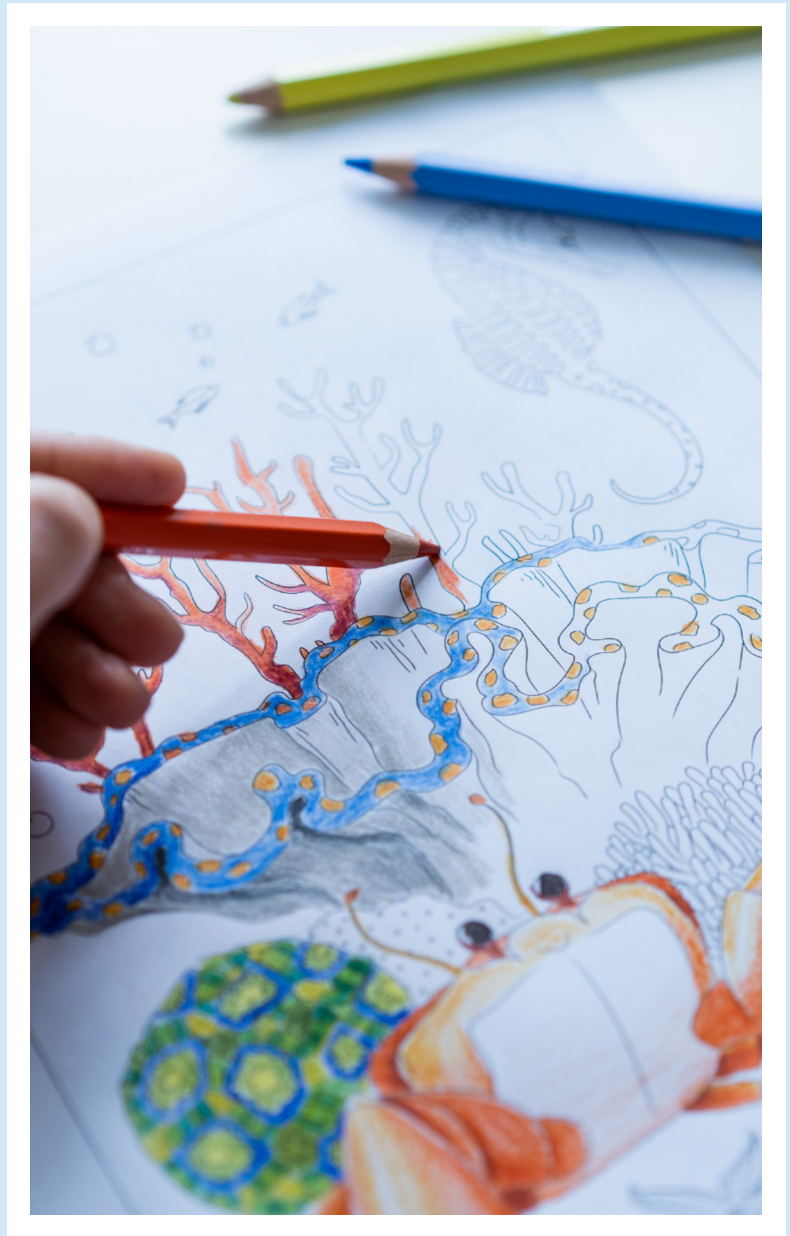
*Get your brightest pencils, markers or crayons and bring to life these reef-inspired illustrations by Australian Artist Fleur Harris.*

## HOW TO MAKE IT

- 1. Print out the illustrations on the following pages onto recycled A4 printer paper.*
- 2. Choose your favourite colours and let your creativity run wild as you bring the illustrations to life with bright colour and pattern. It's ok to go outside the lines!*

## EXTRA TIPS

*Look up some photos in books or online of the Great Barrier Reef and be inspired by the beautiful patterns and colours that are found on the corals and marine life. You might like to incorporate some of these patterns and colour combinations into your artwork!*



## SHARE YOUR MASTERPIECE

*Hang your finished colouring in pages up to bring some bright colour into your home.*

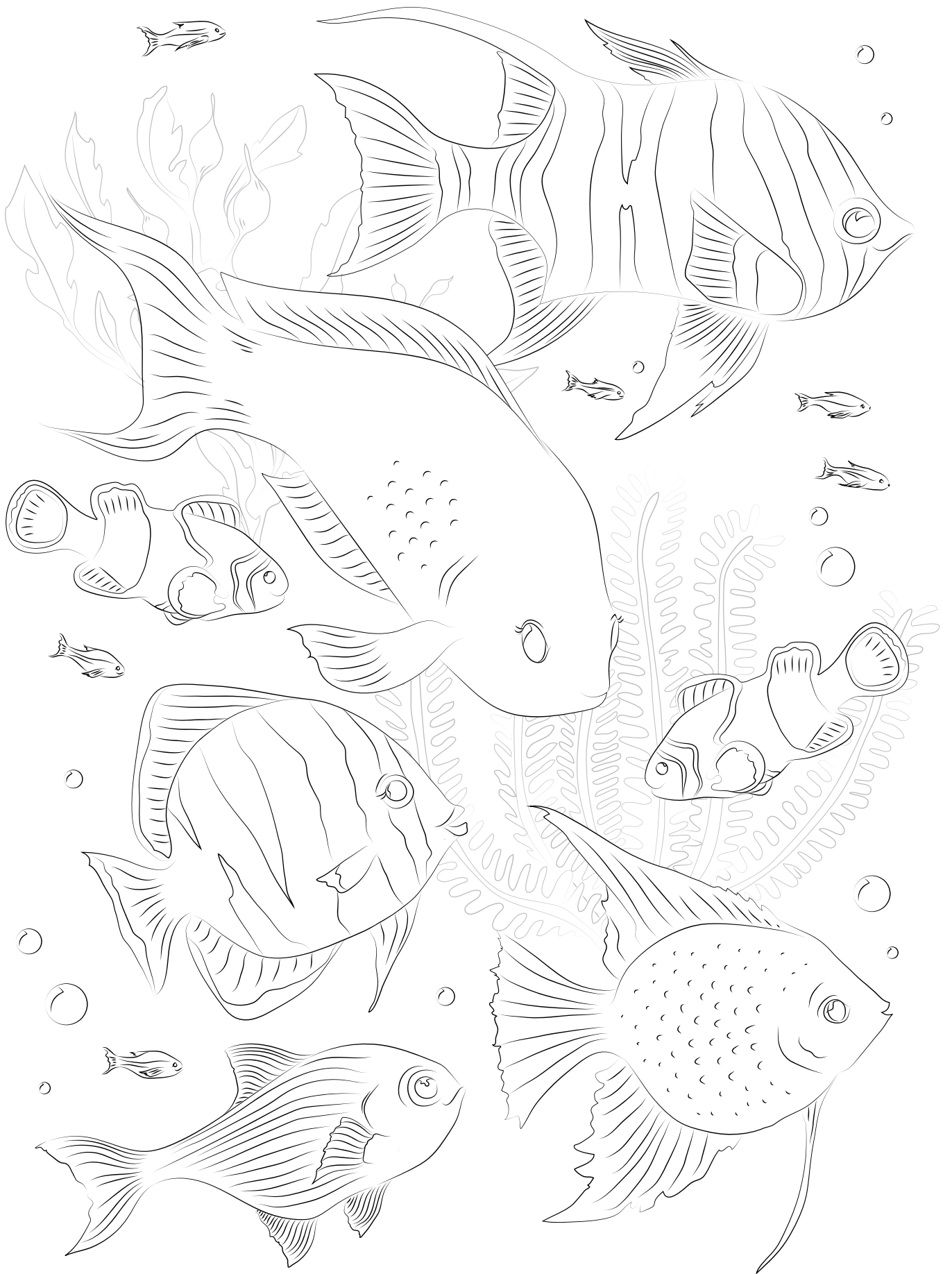
*Use your coloured artwork to make amazing wrapping paper for a small sized gift, or to decorate a hand made card for a loved one.*

*Post a photo of your creation on social media with the hashtag #greatbarrierreef so people all over the world can admire your artwork.*



Great Barrier  
Reef Foundation





The Great Barrier Reef is home to over 1,500 different species of fish! Each one is unique and plays an important role in the biodiversity of the reef. Use bright colours and patterns and bring these fish to life with your creativity!

ARTWORK BY FLEUR HARRIS 2021



Great Barrier  
Reef Foundation



Did you know corals are not plants or rocks? They are actually tiny animals related to jellyfish. There are 600 different types of coral on the Great Barrier Reef! Use bright colours and patterns to decorate this scene of a friendly crab admiring a gentle seahorse from amongst the coral.



Great Barrier  
Reef Foundation

ARTWORK BY FLEUR HARRIS 2021



# ADDITIONAL RESOURCES

Discover some simple everyday actions that can help make a difference for the Great Barrier Reef by clicking [HERE](#)

To take a virtual diving tour through some of the world's most precious reefs click [HERE](#)

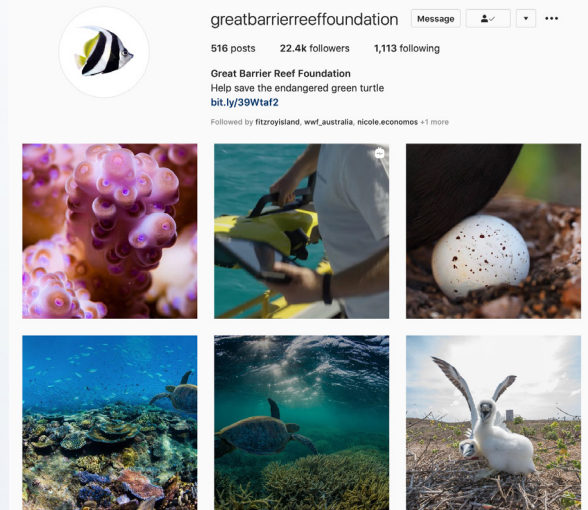
Learn more about what The Great Barrier Reef Foundation is doing to help the endangered Green Turtle by clicking [HERE](#)

Visit The Great Barrier Reef Foundation website [HERE](#) or at [barrierreef.org](http://barrierreef.org)



## SHARE YOUR CREATIONS

Follow The Great Barrier Reef Foundation on instagram and tag us in the pictures you share of your creations.  
@greatbarrierreeffoundation



## ACKNOWLEDGEMENTS

Produced by Fleur Harris  
[fleurharris.com](http://fleurharris.com)  
@fleurharris

Photography by Rolan Gravenall  
[rolanjohnphoto.com](http://rolanjohnphoto.com)  
@rolanjohn\_photo

We acknowledge the Traditional Custodians of the land, the Wurundjeri people, on which this resource was created. We recognise their continuing connection to land, water and community. We pay respect to Elders past, present and emerging.

Inspiring hearts and minds through the beauty of The Great Barrier Reef



Great Barrier Reef Foundation